



# FLOORMATE™



inspiring spaces



Four decades ago, a tiny seed was sown by a man of sublime thoughts and universal vision which led to the formation of Vikas Group, the roots of which are cutting across borders internationally. Today this modest beginning has grown into a vast and fast developing global organisation.

Floormate Rubber Products (P) Ltd, a Vikas group company offers a comprehensive range of Rubber, Plastic and Coir products for the international flooring market.

With export interactions with international markets including UK, Germany, Italy, Denmark, Ireland and USA to name a few, we take pride in offering premium quality products at reasonable prices. Driven by innovation, creative design and efficient domestic manufacturing, we have been able to leap geographical boundaries and create a niche for ourselves in various countries of the world. Our strategic partnerships with global freight forwarders ensures the best supply chain solution tailor made to customer's requirements.

Creating value and quality for customers has been the guiding principle of company ever since its inception. Our superior quality goods and services have been widely appreciated by our worldwide clients and have helped us to acquire repeated orders.

We follow strong business ethics and work with the primary objective of forming a long standing association with our valued customers.





## INFRASTRUCTURE

The company has a well-equipped manufacturing facility for rubber mattings with a plant capacity to process 20 tons of rubber a day. The manufacturing processes are certified as per ISO 9001: 2008 standards and is compliant to all international environmental and safety regulations. With most modern rubber processing machineries and techniques, we guarantee our customers for the time bound shipment of the products.

The company also owns a purpose built warehouse with an area of more than 9,000 sq. ft. for the stocking of finished goods and processing for shipment. The warehouse is equipped with all necessary material handling equipment's for the ease of packaging and stuffing of containers.

In 2011, our UK distribution company VIKAS POLYMERS LTD was opened to cater the needs of the European market. The company uses port side warehouses near to major ports in UK such as Felixstowe, Southampton and Liverpool for door delivery services for full load shipments from India to any European destinations clearing all importing formalities in our account. Moreover, in case of urgent stock requirements, we can offer products from UK thereby providing a back up inventory for our clients in Europe.

Recently the company has started the exporting of plastic meshes from the land of Plastic, Gujarat on a contract manufacturing basis. To facilitate the ease of shipments, we had currently opened a warehouse in Vadodara, Gujarat for the movement of goods through the largest port in India, Mundra.

## RESEARCH & DEVELOPMENT

With strong emphasis on innovation, we believe in working together with the clients in researching and developing new products for the fast growing market. To facilitate the same, we have a strong Research & Development team headed by former faculties of Rubber Research Institute of India.

Special importance is given on the research and development of products that are made as per the regulations followed by different markets such as REACH certified products and phthalate free products.







### **General Purpose Flooring**

Hollow Mat  
 Octagonal Mat  
 Fire Retardant Mat  
 Wave Mat  
 Finger Tip Mat  
 Criss Cross Scrapper Mat  
 Ridge Scrapper Mat  
 Pyramid Mat  
 Vinyl Backed Coir Rolls

### **Industrial & Equine Flooring**

Rubber Bubble Mat  
 Rubber Top Deck Mat  
 Rubber Restaurant Mat  
 Rubber Solid Top Mat  
 Rubber Comfort Lock Mat  
 Rubber Workstep Mat  
 Diamond Modular Mat  
 Oil Resistant Mats  
 Rubber Industrial Runners  
 Electro Static Discharge Mats  
 Rubber Stable Mats  
 Rubber Interlocking Stable Mats

### **Gym Flooring**

Rubber Gym Mats  
 Rubber Gym Tiles  
 Rubber Reversible Interlocking Tiles  
 Rubber Mini Power Tiles  
 Rubber Multi Color Gym Tiles  
 Rubber Rhino Tiles

### **Entrance Flooring**

Rubber Boot Tray Mats  
 Rubber Stair Mats  
 Rubber Cast Iron Mat  
 Rubber Pin Mat  
 Door Mat  
 Coir Mat

### **Plastic Meshes**

Home & Garden-  
 - Hexa fencing Net  
 - Square Mesh  
 - Insect Barrier Net  
 Construction-  
 - Geo Grid Net  
 - Civil Construction Net  
 - Grass Protection Mesh  
 Industrial Application-  
 - Tea / Coffee Withering Net  
 - PR Mesh



# GENERAL PURPOSE FLOORING



❖ Hollow Mat

❖ Octagonal Mat

❖ Fire Retardant Mat

❖ Wave Mat

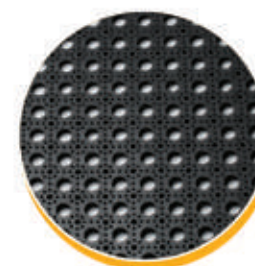
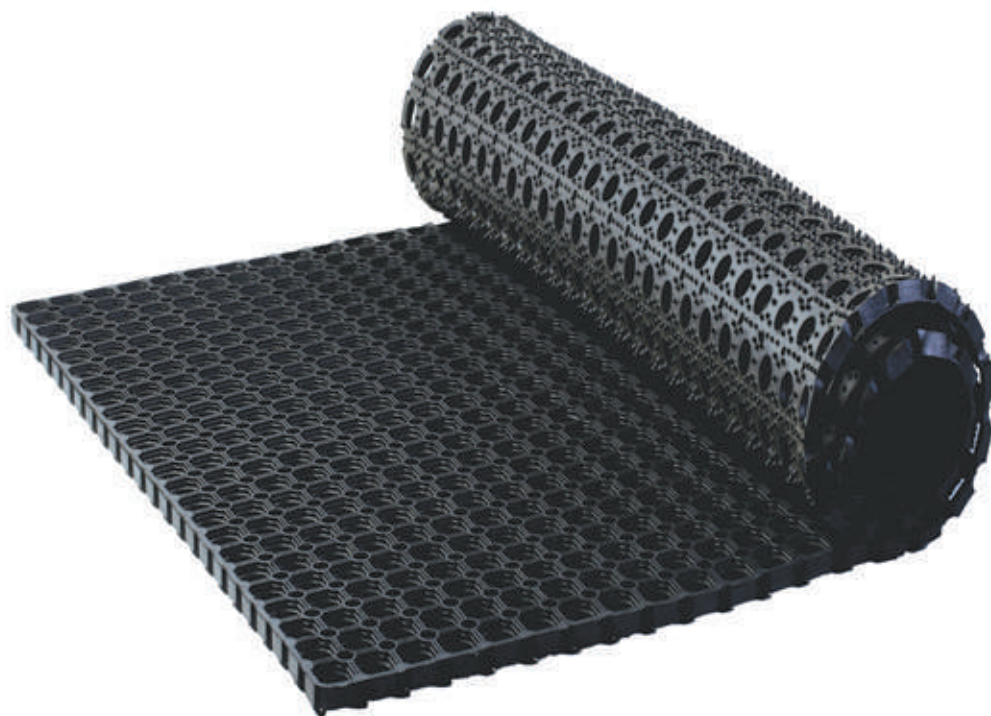
❖ Finger Tip Mat

❖ Criss Cross Scraper Mat

❖ Ridge Scraper Mat

❖ Pyramid Mat

❖ Vinyl Backed Coir Rolls



## Accessories Available



Rubber Brushes



Rubber Connectors



Plastic Cable Ties



Plastic Pegs

### Available Sizes

40x60x1.6cm, 40x70x1.6cm, 40x80x1.6cm, 50x80x1.6cm,  
60x80x1.6cm, 50x100x1.6cm, 80x120x1.6cm, 100x100x1.6cm,  
100x150x2.2cm

40x60x2.2cm, 40x70x2.2cm, 40x80x2.2cm, 50x80x2.2cm,  
60x80x2.2cm, 50x100x2.2cm, 80x120x2.2cm, 100x150x2.2cm

100x 150 x 5 cm

### Available Sizes

- Eco friendly choice for playground surfacing.
- Outdoor, Wet and Snowy areas.

### Features

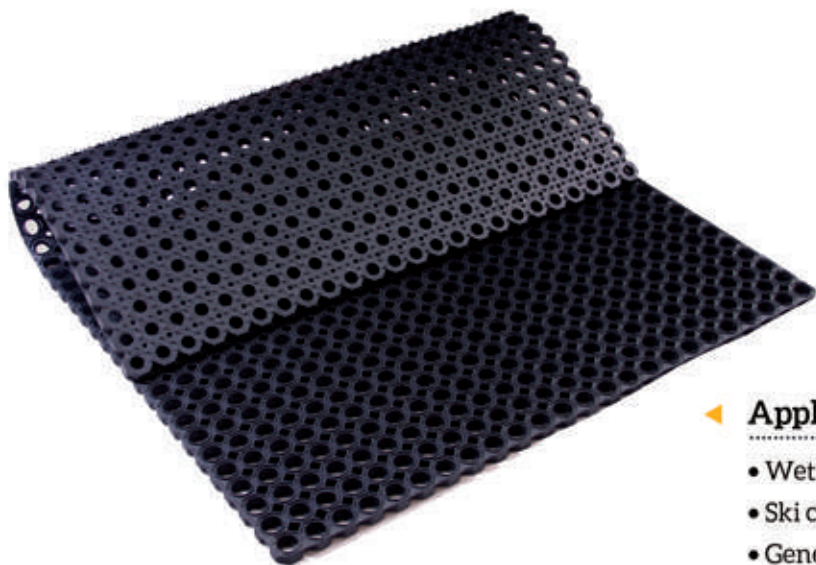
- Made from biodegradable and natural rubber.
- Recycled and Recyclable product and allows grass to grow through for natural play.
- Connectors available to cover large area.
- Plastic Pegs available for fixing the mat to the ground.

### Test Certificates

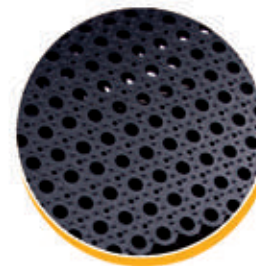
- BSEN 1177 certificate for Critical Fall Height (CFH) of 3m on grass surfaces and 0.8 m on concrete surfaces issued by Rapra Technologies, UK



## RUBBER OCTAGONAL MAT



Product Code: FGP 02



### Application

- Wet and snowy areas.
- Ski centres and Swimming pools.
- General Outdoor Entrance Matting

### Features

- Made from biodegradable natural rubber.
- Heavy-duty mat possessing best anti fatigue properties.
- Strong brushes on the bottom side ensure slip resistance.
- Octagonal ring design facilitates drainage easy

### Available Sizes

40x 60 x 2.2 cm, 100 x 150 x 2.2

## FIRE RETARDANT MATS



Product Code: FGP 03

### Available Patterns

Ring, Octagonal, Top Deck and Link pattern

### Application

- Playground safety surfacing,
- Fire Hazardous area

### Features

- Ideal for hazardous area, as the mat is inherent with a combination of properties for resisting fire.
- Does not emit chlorine or chlorinated gaseous compounds, such as hydrochloric acid fumes, sulfur-monochloride and chlorine etc.
- Very low smoke emission.
- Excellent resistance to general weathering conditions and has inherent ageing resistance.

## RUBBER WAVE MAT



Product Code: FGP 04



### Available Sizes

90 cm x 150 cm x 1.2 cm

### Application

- Perfect for use in wet outdoor applications
- Looks great in commercial and industrial settings

### Features

- With the nice, symmetrical wave design with drainage holes, these mats are perfect for use in areas prone to wetness.
- The raised rib design across the surface of these rubber entrance mats is shaped into unique Wave Design that provides a pleasant aesthetic look.
- The raised rib assists in scraping muck and other debris off from shoes to keep them clean.

## FINGER TIP MAT / BRUSH MATS



Product Code: FGP 05



### Application

- Hotels, Office entrances, Catering Mats, Kitchen mats

### Available Sizes

35cm x 60cm x 1cm, 40cm x 60cm x 1cm, 45cm x 75cm x 1cm, 50cm x 100cm x 1cm; 60cm x 80cm x 1.2cm, 60cm x 100cm x 1.2cm; 80cm x 100cm x 1.2cm, 91cm x 120cm x 1.2cm; 91cm x 152cm x 1.2cm; 91cm x 183cm x 1.2cm

### Features

- Dense co-polymer rubber scraping bristles brushes away mud and dirt from the footwear and hold it underneath the walking surface.
- Easy for cleaning compared to other mats.
- Safety bevelled edges avoids slipping



## CRISS CROSS SCRAPER MAT



Product Code: FGP 06



### Available Sizes

90 x 150 x 1.2 cm

### Application

- Entrances for outdoor and indoor applications with high foot traffic
- General Purpose Entrance Flooring

### Features

- Raised rubber cleats effectively clean foot traffic while trapping debris below the mat's surface.
- Fully launderable, Oil, grease and chemical resistant
- Low profile oval raised rubber checkered surface increase overall scrapping ability and slip resistance.

## RIDGE SCRAPER MAT



Product Code: FGP 07



### Available Sizes

55cm x 85cm x 0.8cm;  
90cm x 150cm x 0.8cm;  
110cm x 172cm x 0.8cm

### Features

- Made from biodegradable natural rubber.
- Heavy-duty mat with thin bristle type top helps in scrapping dirt and dust.
- The low profile design facilitates easy opening of doors

### Application

- Entrances for outdoor and indoor applications with light traffic
- Hotel Entrances, Office Entrances, Retail Store

## RUBBER PYRAMID MAT



Product Code: FGP 08



### Available Sizes

45cm x 75 cm x 1.0 cm;  
90 cm x 150 cm x 1.0 cm

### Application

- Best suited for outdoor and indoor applications with high foot traffic
- Entrances of Offices and Hotels

### Features

- This unique surface has a continuous pyramid design for safer foot traction.
- These mats offer maximum abrasion resistance and are ideal where wheeled carts and equipment are used.
- Knob underside offers maximum aeration and water drainage.

## PVC BACKED COIR ROLLS



Product Code: FGP 09



### Available Sizes

Maximum Width: 2m  
Thickness: 13mm to 23mm

### Application

- Best suited for outdoor and indoor applications with high foot traffic
- Entrances of Offices and Hotels

### Features

- Tufted coir helps in scrapping and superior grip in the flooring.
- Vinyl/ Latex backed bottom helps in high durability possessing anti skid properties.
- Automated cutting mechanism leaves the mats with clean cut sides resistant to fraying and unravelling



# INDUSTRIAL & EQUINE FLOORING

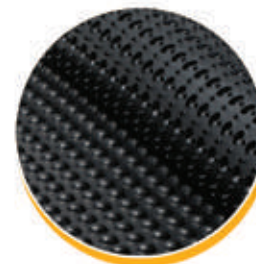


- ▶ Rubber Bubble Mat
- ▶ Rubber Top Deck Mat
- ▶ Rubber Restaurant Mat
- ▶ Rubber Solid Top Mat
- ▶ Rubber Comfort Lock Mat
- ▶ Rubber Workstep Mat
- ▶ Diamond Modular Mat
- ▶ Oil Resistant Mats
- ▶ Rubber Industrial Runners
- ▶ Electro Static Discharge Mats
- ▶ Rubber Stable Mats
- ▶ Rubber Interlocking Stable Mats

## RUBBER BUBBLE MAT



Product Code: FIM 01



### Available Sizes

90 cm x 150 cm x 1.2 cm;  
90 cm x 120 cm x 1.2 cm;  
60 cm x 90 cm x 1.2 cm

### Standard Colours

• Black & Grey

### Features

- Ergonomically engineered top surface to stimulate blood circulation especially for long standing purposes.
- High rubber content ensures ant fatigue features for the standing worker.
- Special nitrile blend available for Industrial uses

### Application

- Industrial Flooring, Garages,
- Automobile Assembling lines,

## RUBBER TOP DECK MAT



Product Code: FIM 02



### Available Sizes

60 x 90 x 1.2 cm  
91 x 153 x 1.2 cm

### Available Colours

Black & Red

### Features

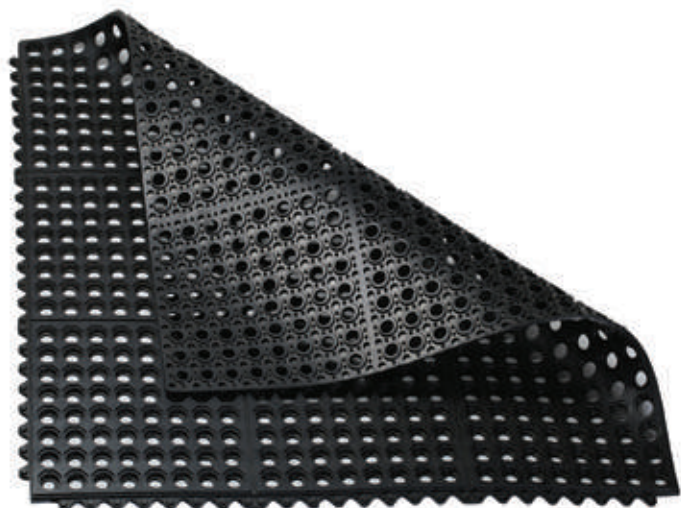
- Anti-fatigue design with drainage facilities.
- Safety bevelled edges preventing tripping.
- Oil resistant for industrial application

### Application

- Kitchen and Restaurants,
- Industrial applications



## RUBBER RESTAURANT MAT



Product Code: FIM 03



### Available Sizes

90 x 90 x 1.4 cm, 90 x 90 x 1.2 cm

### Application

- Kitchen and Bars

### Available Colors

- Black & Red



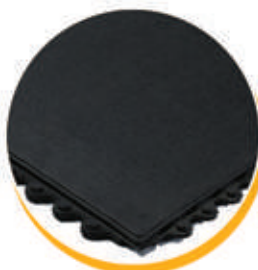
### Features

- Excellent slip resistance in the kitchen area thereby avoiding the hazards of split liquids and oils.
- Protects dropped utensils and tools by the thick mass of rubber.
- Edges designed to facilitate interlocking of mats
- Modular design allows for custom installation

## RUBBER SOLID TOP MAT



Product Code: FIM 04

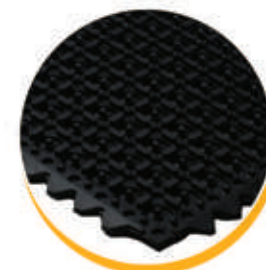


### Available Sizes

90 x 90x 1.6 cm

### Application

- Industrial Workstations,
- machine shops and welding stations
- packaging and assembly areas



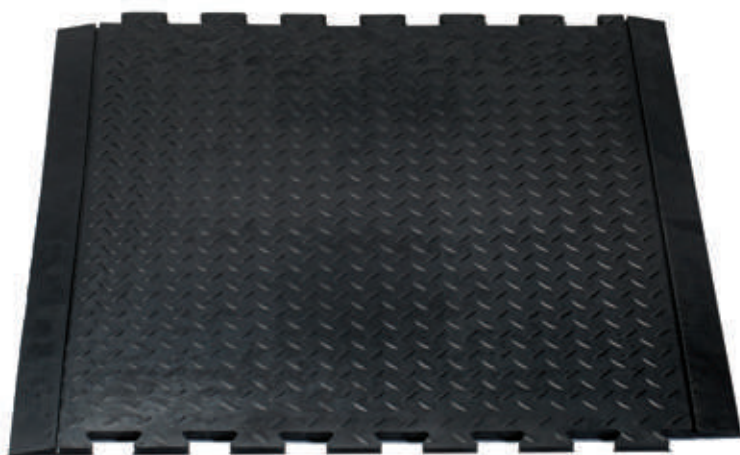
### Features

- Specially designed to provide cushioning effect.
- Textured top design to ensure slip resistance.
- Edges designed to facilitate interlocking of mats.
- Modular design allows for custom-design to fit specific needs.
- Connectable bevelled edges for easy cart access.

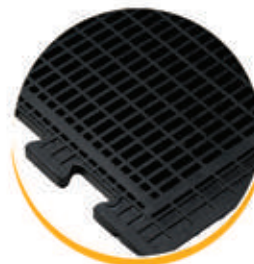
### Available Colours

Black

## RUBBER COMFORT LOCK MAT



Product Code: FIM 05



### Available Sizes

71 cm x 78 cm x 1.6 cm

### Application

- Industrial Workstations
- Continuous production lines

### Standard Colours

- Black



### Features

- Diamond textured top provides anti fatigue property as well superior grip for the foot.
- Zigzag edges designed for interlocking the mats for continuous anti fatigue flooring.
- 2 distinct sections (End, Centre) for easy configuration of lengths and widths.
- Bevelled edges for easy cart access

## RUBBER WORKSTEP MAT



Product Code: FIM 06

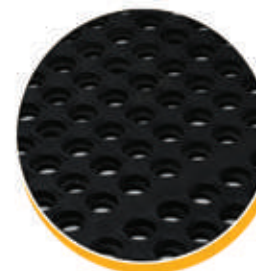


### Available Sizes

90 cm x 150 cm x 1.4 cm

### Application

- Oily, greasy industrial workstations or work cells



### Features

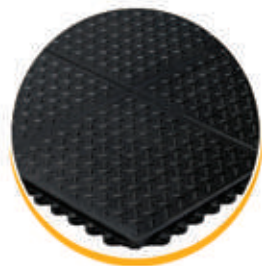
- Holes in mat allow fluids to drain to bottom of mat; ribs at bottom create channels to allow easy drainage of fluids away from the mat.
- Molded, beveled edges to increase safety, easy cart access, and to reduce tripping.
- Cushioned support reduces fatigue and helps prevent accidents



## DIAMOND MODULAR MAT



Product Code: FIM 07



### Available Sizes

- 91 cm x 91 cm x 1.6 cm

### Application

- Workstations
- Machine Shops & Welding stations

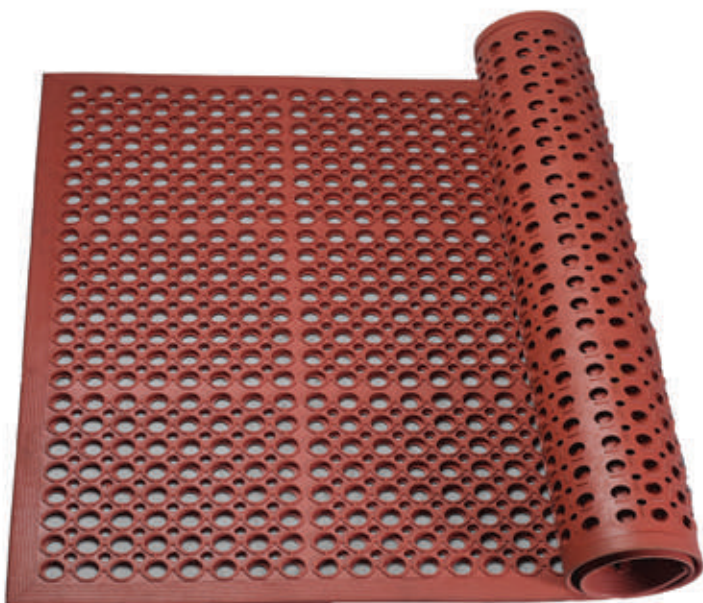
### Features

- Diamond textured top pattern ensures excellent grip.
- Puzzle connectors to enable interlocking of the mats for long runners.
- Safety bevelled edges providing safety in the workplace.

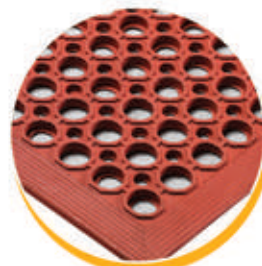
### Available Colors

- Black and Grey

## OIL RESISTANT MATS



Product Code: FIM 08



### Available Sizes

- 91 x 91 x 1.3 cm,
- 91 x 91 x 1.6 cm (Heavy Duty)
- 91 x 152 x 1.2 cm (Ramp Mat)

### Application

- Restaurants,
- Decks of Ships

### Features

- Specially designed to resist swelling when exposed to oil and ring type structure enables better drainage facility.
- Excellent anti fatigue property due to thick mass of rubber

## RUBBER INDUSTRIAL RUNNERS



Product Code: FIM 09

### Available Patterns



### Available Sizes

1m x 10m; Thickness: 1.2 cm (Fingertip Roll)  
1.8m x 10m; Thickness: 1.2 cm (Ramp Mat)

### Application

- Ideal for industrial areas and machine shops
- Truck matting.

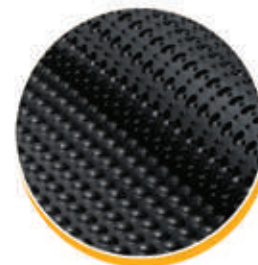
### Features

- The stippled backing allows air to circulate and prevent water collection, which will help prevent rust forming at the bottom of the tray.
- The stippled backing also provides a non-slip surface and prevents the mat from moving

## ELECTRO STATIC DISCHARGE MAT



Product Code: FIM 10



### Available Sizes

90 x 150 x 1.2 cm  
90 x 120 x 1.2 cm  
60 x 90 x 1.2 cm

### Application

- Electrical work Area

### Features

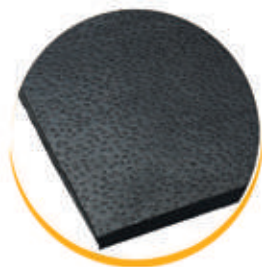
- Particularly engineered product that prevents build-up of static electricity by instantly draining off electro static charges from workers.
- Special chemical compound to prevent dangerous sparks in volatile work environments.
- Hardwearing and load bearing properties of the mat offers cushioning effect to the standing workers.
- Electrical resistivity range of  $1 \times 10^3$  to  $1 \times 10^6$  ohms



## RUBBER STABLE MATS



Product Code: FIM 11



### Available Sizes

180cm x 120cm  
(Thickness: 8mm, 10mm,  
12mm, 18mm)

### Application

- Horse Stables, Cow Cubicles



### Features

- High rubber content reduces the risk of injury and fatigue of horses thereby increasing the efficiency of the horse.
- Helps on protection and provides sufficient insulation and is a real saving on bedding and time.
- Grooved bottom patterns helps in flow of water easily

## RUBBER INTERLOCKING STABLE MATS



Product Code: FIM 12



### Available Sizes

90cm x 120cm  
(Thickness: 2cm) - Interlocking

### Application

- Cow Cubicles, Horse Stables



### Features

- Interlocking pattern helps in installation in existing stables.
- Thick mass of rubber increases the comfort for the horses and increase in efficiency.
- Specially designed groove that facilitates easy movement of water and also provides cushioning effect

# GYM FLOORING



- 🌈 Rubber Gym Mats
- 🌈 Rubber Gym Tiles
- 🌈 Rubber Reversible Interlocking Tiles

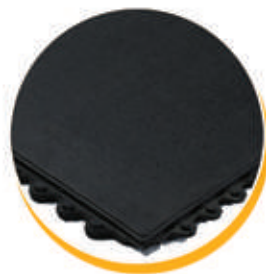
- 🌈 Rubber Mini Power Tiles
- 🌈 Rubber Multi Color Gym Tiles
- 🌈 Rubber Rhino Tiles



## RUBBER GYM MATS



Product Code: FGM 01



### Available Sizes

91cm x 91cm x 1.6 cm;  
91cm x 91cm x 1.8 cm

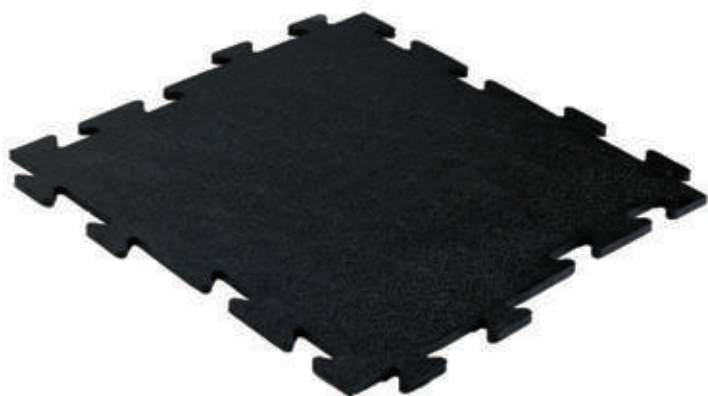
### Application

Weight Rooms of Gyms,  
Aerobic Rooms

### Features

- Etched surface pattern provides sure footing
- Specially designed studded bottom protects floor from skate blades and heavy weights
- High shock absorbency and long wearing toughness
- Ergonomically designed bottom to get rid of the fatigue due to long standing

## RUBBER GYM TILES



Product Code: FGM 02



### Available Sizes

50 cm x 50 cm x 0.8 cm

### Application

- Commercial Gyms, Dance Rooms,
- DIY Floors, Fitness Centers

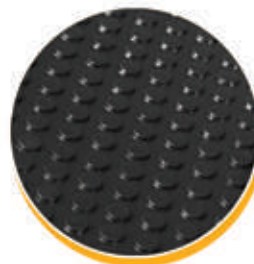
### Features

- The interlocking puzzle design on the edges make for an effortless installation process
- The vulcanized surface of these recycled floors comes with a pebble top finish.
- High Quality rubber helps the tile give feet a good level of comfort and traction

## RUBBER REVERSIBLE INTERLOCKING TILES



Product Code: FGM 03



### Available Sizes

100cm x 100cm x 1.6 cm

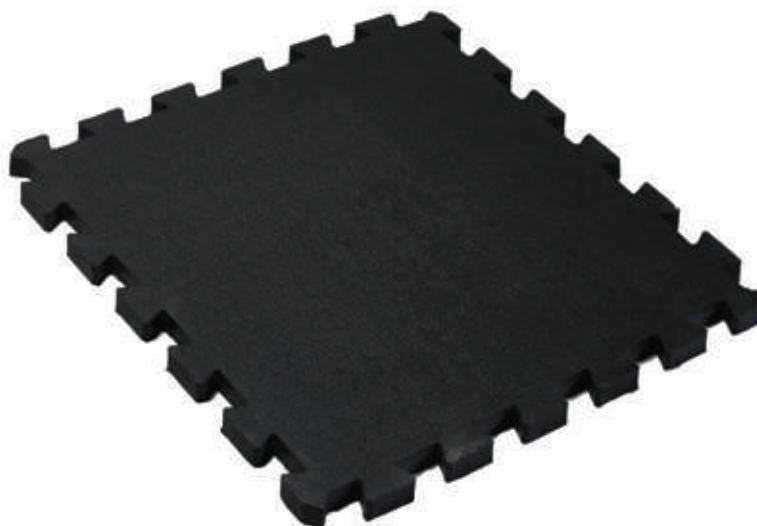
### Application

- Used in Gyms, Workshops.
- Walkways and Industrial applications

### Features

- Interlocking Rubber Tiles featuring a coin top surface and underside for excellent anti-slip properties.
- Coin top bottom and Bottom side provides extra cushioning and airflow.
- Bevelled edges available for easy cart access.

## RUBBER MINI POWER TILES



Product Code: FGM 04



### Available Sizes

50cm x 50cm x 1.6 cm

### Application

- Gyms, Workshops
- Commercial Floors, School Floors

### Features

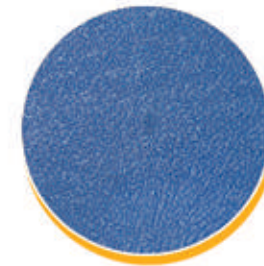
- Unique rubber formulation is highly slip-resistant and helps reduce noise from footfall while increasing comfort.
- Zig Zag interlocking edges facilitates easy joining of mats.
- Excellent protective buffer between hard flooring and expensive weight room equipment



## RUBBER MULTI COLOR TILES



Product Code: FGM 05



### Available Sizes

50cm x 50cm x 1.6 cm

### Application

- Gyms, Kinder gardens
- Commercial Floors, School Floors

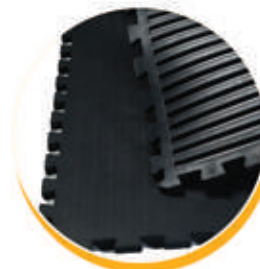
### Features

- Interlocking edges facilitates easy joining of mats for long runs..
- Available in different colors to suit different indoor settings.
- Grooved bottom helps in airflow and ergonomics

## RUBBER GYM RHINO TILES



Product Code: FGM 06



### Available Sizes

100 cm x 100 cm x 1.6 cm

### Application

- Gyms, Weight Rooms

### Features

- Amoebic top design facilitates excellent grip to the foot.
- Grooved Bottom facilitates good shock absorbing property

# ENTRANCE FLOORING



- ◆ Rubber Boot Tray Mats
- ◆ Rubber Stair Mats
- ◆ Rubber Cast Iron Mat

- ◆ Rubber Pin Mat
- ◆ Door Mats
- ◆ Coir Mat



**Available Sizes**

40 x 60 cm, 45 x 75 cm

**Application**

- Entrances for outdoor and indoor applications with high foot traffic
- General Purpose Entrance Flooring

**Features**

- Made exclusively out of natural rubber; durable and weather resistant.
- Effective boot tray design traps dirt; ideal for indoor and outdoor use.
- Raised ridges on the base helps in keeping your boots dry
- Specially designed bottom to ensure slip resistance



FEM B 01



FEM B 02



FEM B 03



FEM B 04



FEM B 05



FEM B 06



FEM B 07



FEM B 08

### Available Sizes

40 x 60 cm, 45 x 75 cm

### Application

- Indoor and Outdoor stairways

### Features

- Specially designed top texture on each anti-slip stair tread to provide grip and enhance traction.
- The mass of rubber provide a buffer zone between the wear and tear of foot traffic and the sensitive step surfacing
- Can be installed to stair surface with double-sided tape



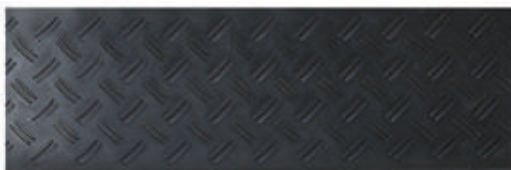
FEM S 01



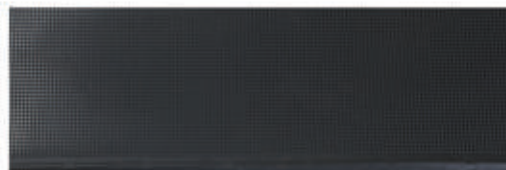
FEM S 02



FEM S 03



FEM S 04



FEM S 05



FEM S 06



FEM S 07



FEM S 08



### Available Sizes

40 x 70 Cm

### Features

- Classic designs that brings touch of class to the door
- Highly durable and long lasting
- Several designs to meet different market segments.



FEM101



FEM102



FEM103



FEM104



FEM105



FEM106



FEM107



FEM108



FEM109



## RUBBER PIN MATS

### Available Sizes

40 x 60 cm  
45 x 75 cm

### Features:

- Wide variety of designs available



FEM P 01



FEM P 02



FEM P 03



FEM P 04



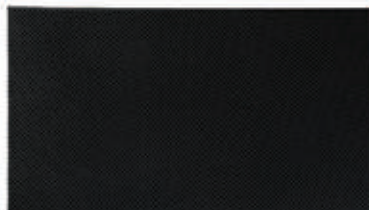
FEM P 05



FEM P 06



FEM P 07



FEM P 08



FEM P 09



FEM P 10



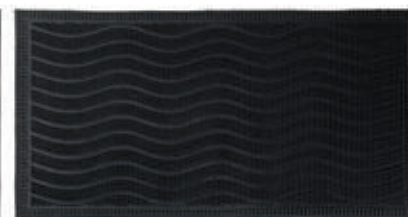
FEM D 11



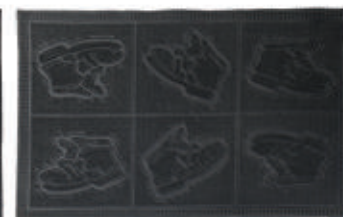
FEM D 12



FEM D 13



FEM D 14



FEM D 15



FEM D 16



FEM D 17



## Available Sizes

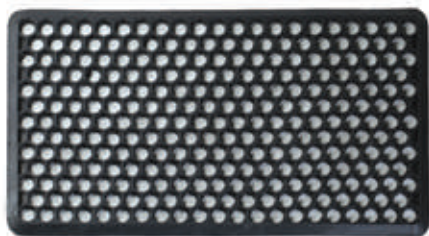
40 x 60 cm  
45 x 75 cm

## Features:

- Wide Variety of designs that appeals to different exterior furnishings
- High Quality, economical and various designs.

## Applications

- Exteriors of Homes and Gardens



FEM D 01



FEM D 02



FEM D 03



FEM D 04



FEM D 05



FEM D 06



FEM D 07



FEM D 08



FEM D 09



FEM D 10



FEM D 11



FEM D 012



FEM D 13



### Available Sizes

40 x 60cm, 40 x 70 cm,  
45 x 75 cm, 60 x 90cm,  
75 x 120cm

### Features

- 100% Natural, biodegradable and eco-friendly choice for entrance matting system.
- Helps to take off the dirt and dust from the footwear
- Available in 3 different styles with various patterns



FEM C 01



FEM C 02



FEM C 03



FEM C 04



FEM C 05



FEM C 06



FEM C 07



FEM C 08



FEM C 09



FEM C 10



FEM C 11



FEM C 12



FEM C 13



FEM C 14



FEM C 15



FEM C 16



FEM C 17



FEM C 18



# PLASTIC MESHES



## HOME & GARDEN

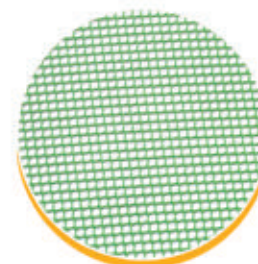
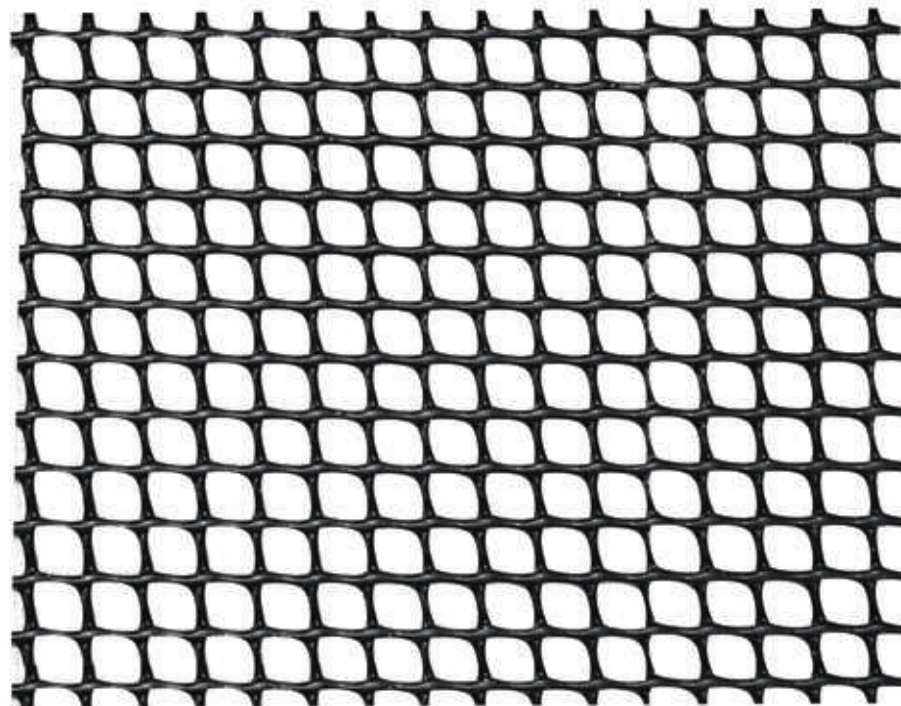
Hexa fencing Net  
Square Mesh  
Insect Barrier Net

## CONSTRUCTION

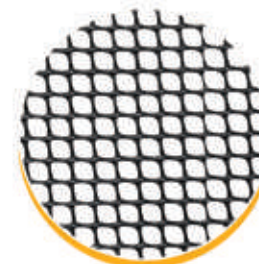
Geo Grid Net  
Civil Construction Net  
Grass Protection Mesh

## INDUSTRIAL APPLICATION

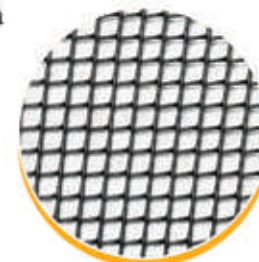
Tea / Coffee Withering Net  
PR Mesh



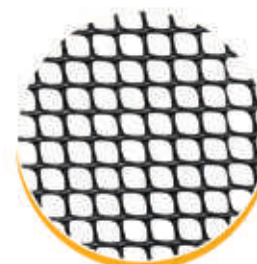
4 mm Square Mesh



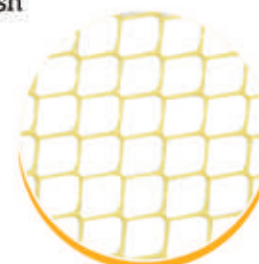
6 mm Square Mesh



8 mm Square Mesh



12 mm Square Mesh



15 mm Square Mesh

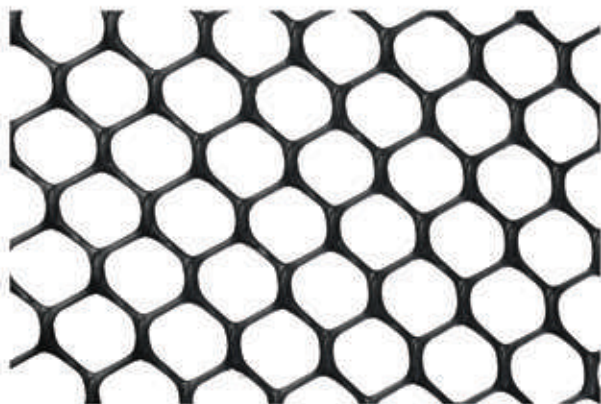
Color	Ivory / Green / Silver / Black
Width	1.00 / 1.30 / 1.40 / 2.00 Mtr
Length	25.00 Mtr
Aperture	4 x 4mm / 6x6mm / 8x8mm / 12 x 12 mm / 15x15mm
Pattern	Square

### Application

- General Purpose Mesh
- Used for partitions, fencing, desert cooler, air conditioners, etc



## HEXA FENCING NET



Color	Green / Black / Silver / Ivory
Width	1.20 to 2.00 Mtr
Length	25.00 Mtr
Aperture	28mm x 28 mm ( + /- 3mm)

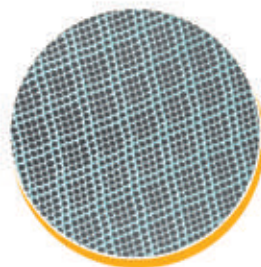
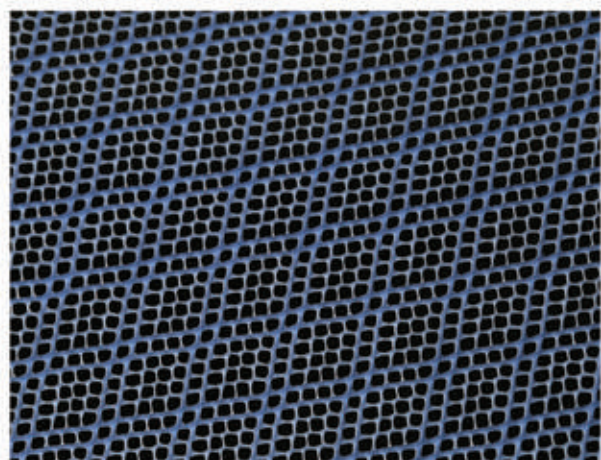
### Features

- Easy to Install, Light Weight, Durable
- Act as an effective enclosure for playgrounds, clubs and sports complexes

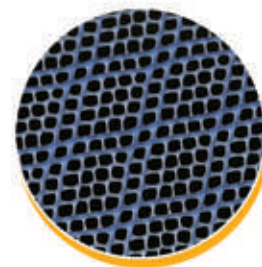
### Application

- Ideal for garden and outdoor application

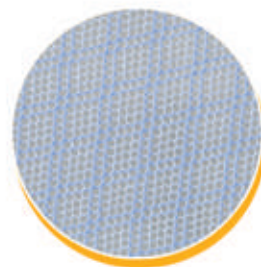
## INSECT BARRIER NET



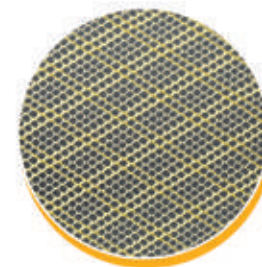
Insect barrier 1



Insect barrier 2



Insect barrier 3

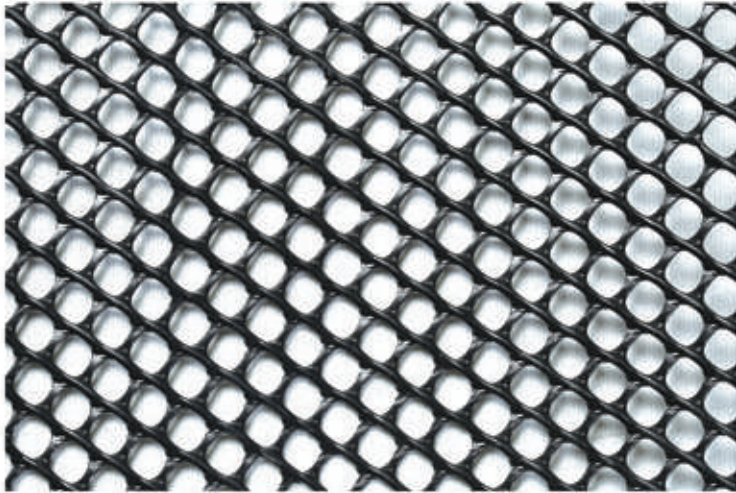


Insect barrier 4

Color	Green / Black / Silver / Ivory
Width	0.9, 1.2 & 1.5 Mtr
Length	25.00 Mtr
Aperture	4 X 4 mm, 6 X 6 mm, 8 X 8 mm, 5 X 5 mm, 15 X 15 mm

### Features

- No impediment to air flow or Sunlight
- Non rustic and Non Corrosive
- UV Stabilized & long shelf life



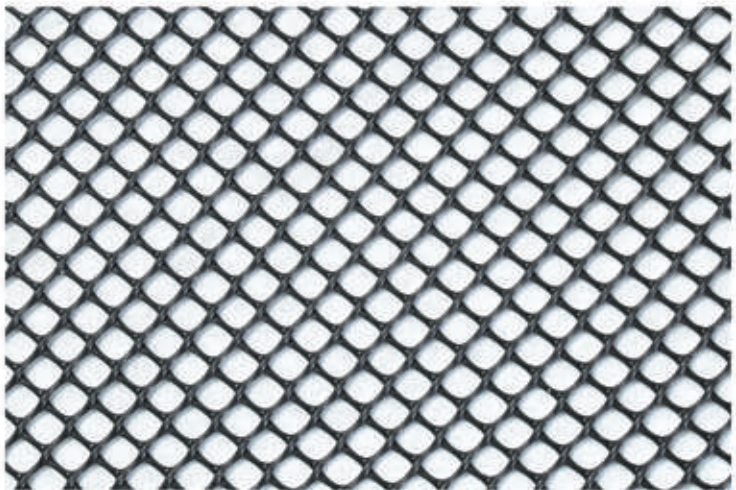
#### Features

- High in durability, dimensional accuracy and tensile strength
- Improves bearing capacity of foundation
- Prevents subsidizing and cracking

#### Application

- Soft foundation reinforcement for landfill sites and highways

### CIVIL CONSTRUCTION NET



#### Features

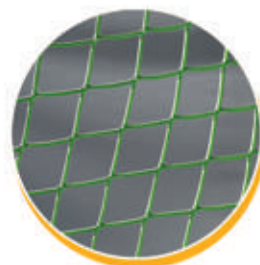
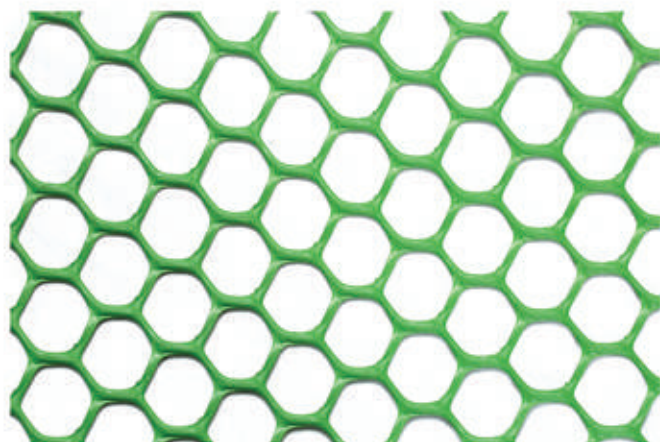
- Manufactured in accordance with international quality standards
- Gives protection to the slopes against landslides and erosion
- Can be made as per customer requirement

#### Application

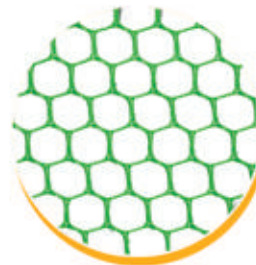
- Provides complete reinforcement to the sub-base of the road
- Facilitates construction of embankments over soft soil
- Construction of water front structures and many other applications



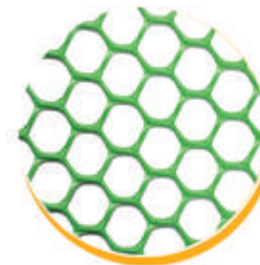
## GRASS PROTECTION MESH



Turf Protection Mesh



Mini Grass Reinforcement Mesh



Grass Reinforcement Mesh

Color	Black & Green
Grade	Standard Grade, Heavy Duty Grade

### Features

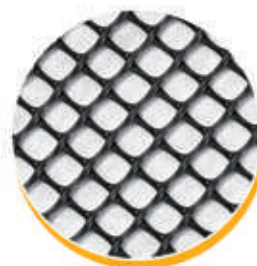
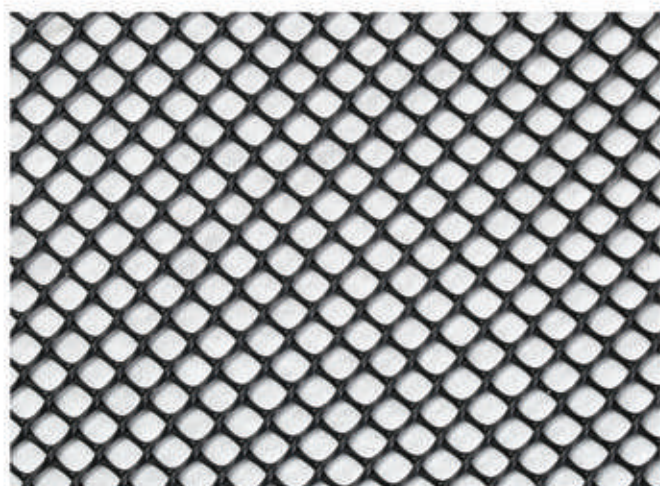
- Very strong
- Protects from wheel rutting
- Ensures good grasp for grass roots

### Application

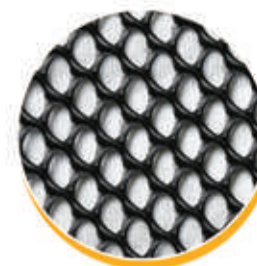
- Car Parking, Pedestrian grassed area

## INDUSTRIAL APPLICATION

### TEA / COFFEE WITHERING NET



Tea Weathering Mesh



Tea Weathering Net Type 2

Shape	Diamond
Width	1.83 Mtr
Length	25.00 Mtr
Aperture	7mm x 6mm (+/-2mm)

### Features

Manufactured using food grade material  
Available in different colours, and sizes

### Application

Used in Tea / coffee Industry

## TUBULAR NETS FOR PROTECTION / PR MESH



### ◀ Sleeves Products

PRODUCT	WIDTH	LENGTH	COLOUR
PS 011	10-15 MM	25 MTR	RED,BLUE
PS 012	15-30 MM	25 MTR	RED,BLUE
PS 013	30-40 MM	25 MTR	ORANGE
PS 014	40-50 MM	25 MTR	BROWN
PS 015	50-65 MM	25 MTR	WHITE
PS 016	65-80 MM	25 MTR	GREY
PS 017	80-105 MM	25 MTR	YELLOW
PS 018	105-130 MM	25 MTR	BLUE
PS 019	130-200 MM	25 MTR	YELLOW
PS 020	100-200 MM	25 MTR	G YELLOW
PS 021	18-60 MM	25 MTR	G YELLOW
PS 022	50-100 MM	25 MTR	G YELLOW
PS 022	200-400 MM	25 MTR	G YELLOW
PS 022	400-800 MM	25 MTR	G YELLOW

### ◀ PRODUCT: - FOAM NET (WINE/LIQUOR BOTTLES SLEEVES)

Color	WHITE
Width	75 MM
Length	210 MM



## LOADABILITY

Products	Size	20' Container	40' Container
Rubber Hollow Mat	100 cm x 150 cm x 2.2 cm	700 pcs	1800 pcs
Rubber Octagonal Mats	100 cm x 150 cm x 2.2 cm	700 pcs	1650 pcs
Rubber Top Deck Mats	90 cm x 150 cm x 1.2 cm	1120 pcs	2700 pcs
Rubber Scraper Mats	90 cm x 150 cm x 1.2 cm	1260 pcs	2650 pcs
Rubber Bubble Mats	90 cm x 120 cm x 1.2 cm	2000 pcs	3700 pcs
Rubber Gym Mats	90 cm x 90 cm x 1.6 cm	1200 pcs	2800 pcs
Rubber Restaurant Mats	91 cm x 91 cm x 1.4 cm	1680 pcs	3840 pcs
Rubber Stable Mats	180 cm x 120 cm x 1.7 cm	450 pcs	N/A
Rubber Stable Mats	180 cm x 120 cm x 1.2 cm	600 pcs	N/A



## Head Office

### Floormate Rubber Products (P) Ltd

2/ 106 B, Thalappady, Rubber Board P.O  
Kottayam - 686009, Kerala, India  
Website: [www.floormaterubber.com](http://www.floormaterubber.com)  
Email: [info@floormaterubber.com](mailto:info@floormaterubber.com)  
Ph: +91-481-2353178, Mob: +91-9645005044

## BRANCHES

### India

#### Vikas Rubbers

2 / 106 A, Thalappady, Rubber Board P.O  
Kottayam - 686009, Kerala, India  
Website: [www.vikasrubbers.com](http://www.vikasrubbers.com)  
Ph.: +91-481-2353178, Mob: +91-8547381789

### United Kingdom

#### Vikas Polymers Ltd

1349-1353 London Road, Leigh-on-Sea,  
Essex SS9 2AB, United Kingdom  
Website: [www.vikaspolymers.co.uk](http://www.vikaspolymers.co.uk)  
Email: [sales@vikaspolymers.co.uk](mailto:sales@vikaspolymers.co.uk)

## SALES CONTACT

### United States of America

#### John Mathews

#### Marian Trading International Inc

16, Greenway Terrace, Lake Grove, NY - 11755  
Email: [mathewsjohn72@yahoo.com](mailto:mathewsjohn72@yahoo.com)  
Tel: 631 580 2124, 631 456 2322

### Republic of Ireland

#### Stephen O' Brien

#### Celuplast Ltd

Unit 52, Baldoye Industrial estate  
Dublin - 13, Ireland  
Website: [www.celuplast.com](http://www.celuplast.com)  
Email: [sales@celuplast.com](mailto:sales@celuplast.com)  
Phone- 00353879920999

### Europe (Plastic Meshes)

#### Marco Abbiati

Mob: 00447802644456  
Email: [Marco.abbiati@plasnets.com](mailto:Marco.abbiati@plasnets.com)